

ON Starting Position

3.70

0.70

1.70 Full Position

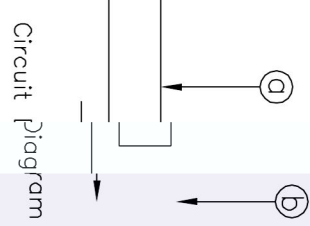
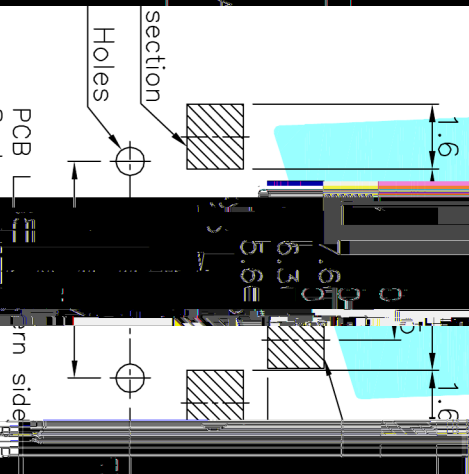
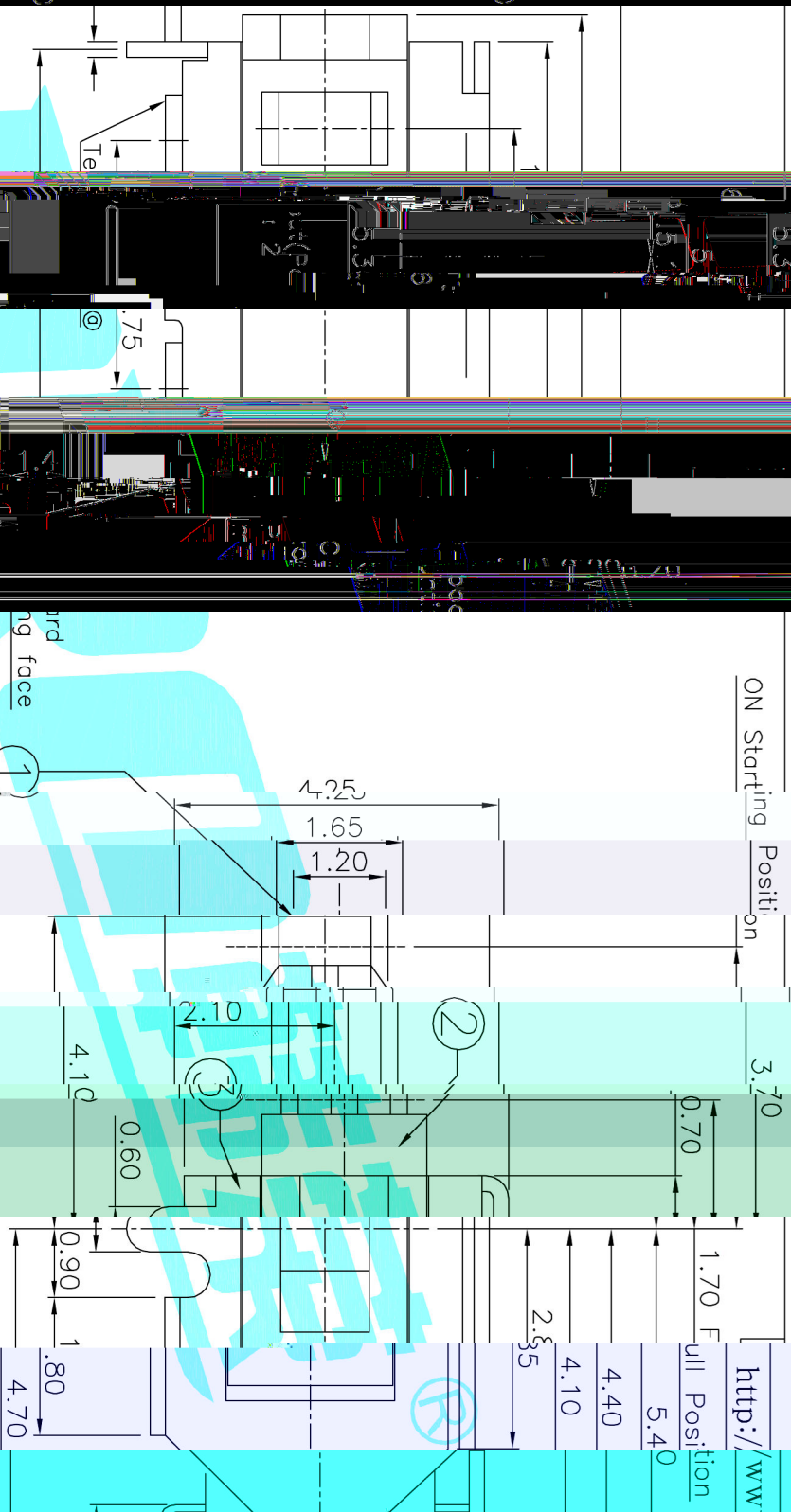
5.40

4.40

4.10

2.35

<http://www.S...>



ITEM	PART NAME	QTY.	MATERIAL
1	Spring	1	SUS
2	Contact Spring	1	Phosphor Bronze
3	Base	1	NYLON
4	Terminal	1	Phosphor Bronze
5	Trestle	2	SP2C
6	Cover	1	NYLON
7	Knob	1	NYLON

DATE	TER. NO.	QTY.	MATERIAL
2013/9/5	1	1	NYLON

APPROVALS	DATE
J.X.Zhang	2013/9/5

APPROVALS	CHECKED	APPROVED

TOLERANCES ARE	±0.30	±0.20	±0.15	±0.10
30±				
10±				
5±				
2±				
1±				

NOTE:
1. Rating: F
2. Operating Life: 50000

SCALE:
1:1

PCB Scale:

Scale:

1:1

ROZS

ECON. NO. A

REV. 3

4-300000

2-Ø0.75